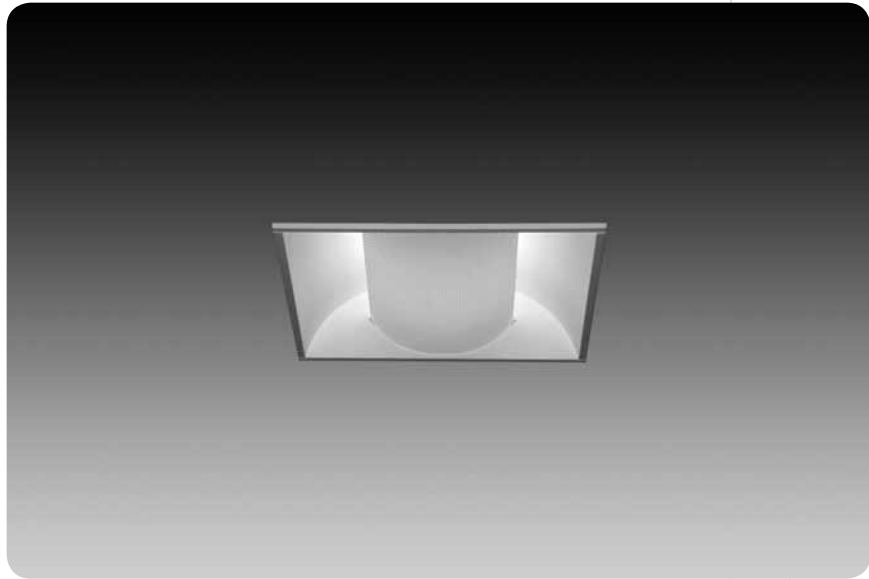


luna[®] 1x1



features

1'x1' recessed indirect offers a distinct aesthetic in a compact form that highlights interior architecture.

Reflector and end caps form seamless one-piece housing.

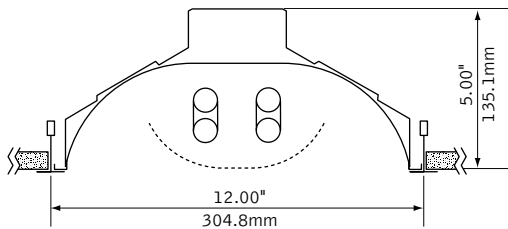
High reflectance, low gloss Matte White finish controls glare and provides high efficiency.

Luminaire may be mounted in acoustical grid or drywall ceiling.

Perforated shield snaps out for easy relamping.

Luna[®] provides high angle uniform distribution ideal for corridors, entries and small offices.

dimensional data

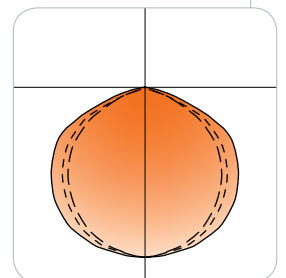


lampping options



performance

2-Lamp 18W Biax
54% Efficiency
521 cd @ 0°



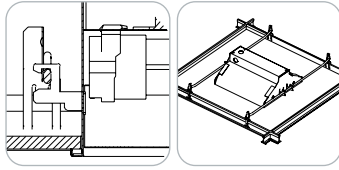
Visit focalpointlights.com for complete photometric data.

fixture:

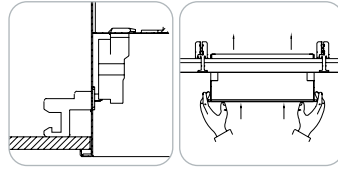
project:

mounting information

grid



drywall



grid and drywall cut out dimensions: 11.25" x 11.25"

specifications

construction

One-piece 20 Ga. steel reflector and housing.
20 Ga. steel ends form finished housing.
Lamps are shielded by detachable 22 Ga. steel perforated lamp shield with acrylic lens insert.
Top access 20 Ga. steel ballast compartment.

weight: 5 lbs

optic

One-piece 20 Ga. steel reflectors finished in Matte Satin White powder coat.

electrical

Electronic ballasts are thermally protected and have a Class "P" rating.
Consult factory for dimming specifications and availability.
UL and cUL listed.

finish

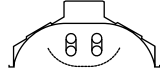
Polyester powder coat applied over a 5-stage pre-treatment.

ordering

luminaire series	Luna	FLU	<u>FLU</u>
nominal size	1' x 1'	11	<u>11</u>
distribution	Bi-Directional	B	<u>B</u>
lamp quantity	Two Lamps	2	<u>2</u>
lamp type	18 Watt Biax	BX18	<u>BX18</u>
ballast	Electronic Program Start <10% THD	S	<u>S</u>
voltage	120 Volt	120	
	277 Volt	277	
mounting	Universal	U	<u>U</u>
shielding	Perforated Shield	PS	<u>PS</u>
factory options	Chicago Plenum	CP	
	HLR/GLR Fuse	FU	
	Include 3000K Lamp	L830	
	Include 3500K Lamp	L835	
	Include 4100K Lamp	L841	
finish	Matte Satin White	WH	<u>WH</u>

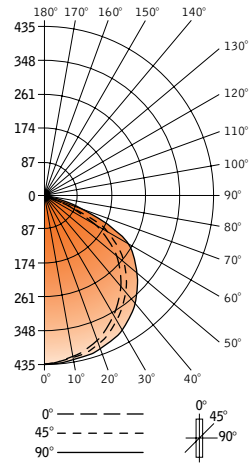
* for more information see Reference section.

luna[®] 1x1



Filename: FLU112BX18PS.IES
 Catalog #: FLU-11-B-2-Bx18-E-120-U-PS-WH
 Efficiency: 54%
 Test #: 11719.0

CANDLEPOWER DISTRIBUTION



Spacing 1.2
 Criterion: 1.3

Vertical Angle	Horizontal Angle				Zonal Lumens
	0°	22.5°	45°	67.5°	
0°	521	521	521	521	521
5°	522	518	518	518	518
15°	497	494	498	501	504
25°	450	452	460	470	476
35°	386	394	407	421	428
45°	307	320	339	347	352
55°	219	233	245	240	233
65°	125	137	131	137	141
75°	53	53	60	63	63
85°	8	9	11	11	11
90°	0	0	0	0	0
95°	0	0	0	0	0
105°	0	0	0	0	0
115°	0	0	0	0	0
125°	0	0	0	0	0
135°	0	0	0	0	0
145°	0	0	0	0	0
155°	0	0	0	0	0
165°	0	0	0	0	0
175°	0	0	0	0	0
180°	0	0	0	0	0

LUMEN SUMMARY

Zone	Lumens	% Lamp	% Fixt
0°-30°	404	16.2	30.2
0°-40°	660	26.4	49.4
0°-60°	1130	45.2	84.6
0°-90°	1337	53.5	100.0
Total Luminaire	1337	54	100

LUMINANCE DATA (CD/M²)

Vertical Angle	0°	45°	90°
45°	5488	6060	6292
55°	4826	5399	5135
65°	3739	3918	4217
75°	2588	2930	3077
85°	1160	1595	1595

CO-EFFICIENTS OF UTILIZATION

Floor	80				70				20				
Ceiling	70	50	30	10	70	50	10	50	10	50	10	10	00
Wall	64	64	64	64	62	62	62	59	59	57	57	55	55
RCR 0	64	64	64	64	62	62	62	59	59	57	57	55	55
1	59	57	55	53	58	56	52	53	51	51	49	50	48
2	54	51	47	45	53	50	44	48	43	46	42	45	41
3	50	45	41	38	49	44	38	43	37	41	37	40	36
4	46	40	36	33	45	40	33	38	32	37	32	36	31
5	42	36	31	28	41	35	28	34	28	33	27	32	27
6	39	32	28	24	38	32	24	31	24	30	24	29	24
7	36	29	25	21	35	29	21	28	21	27	21	26	21
8	33	26	22	19	32	26	18	25	18	24	18	24	18
9	30	23	19	16	30	23	16	22	16	22	16	21	16
10	28	21	17	14	28	21	14	20	14	20	14	19	14

Numbers indicate percentage values of